

← Floor plan provided by clients architect

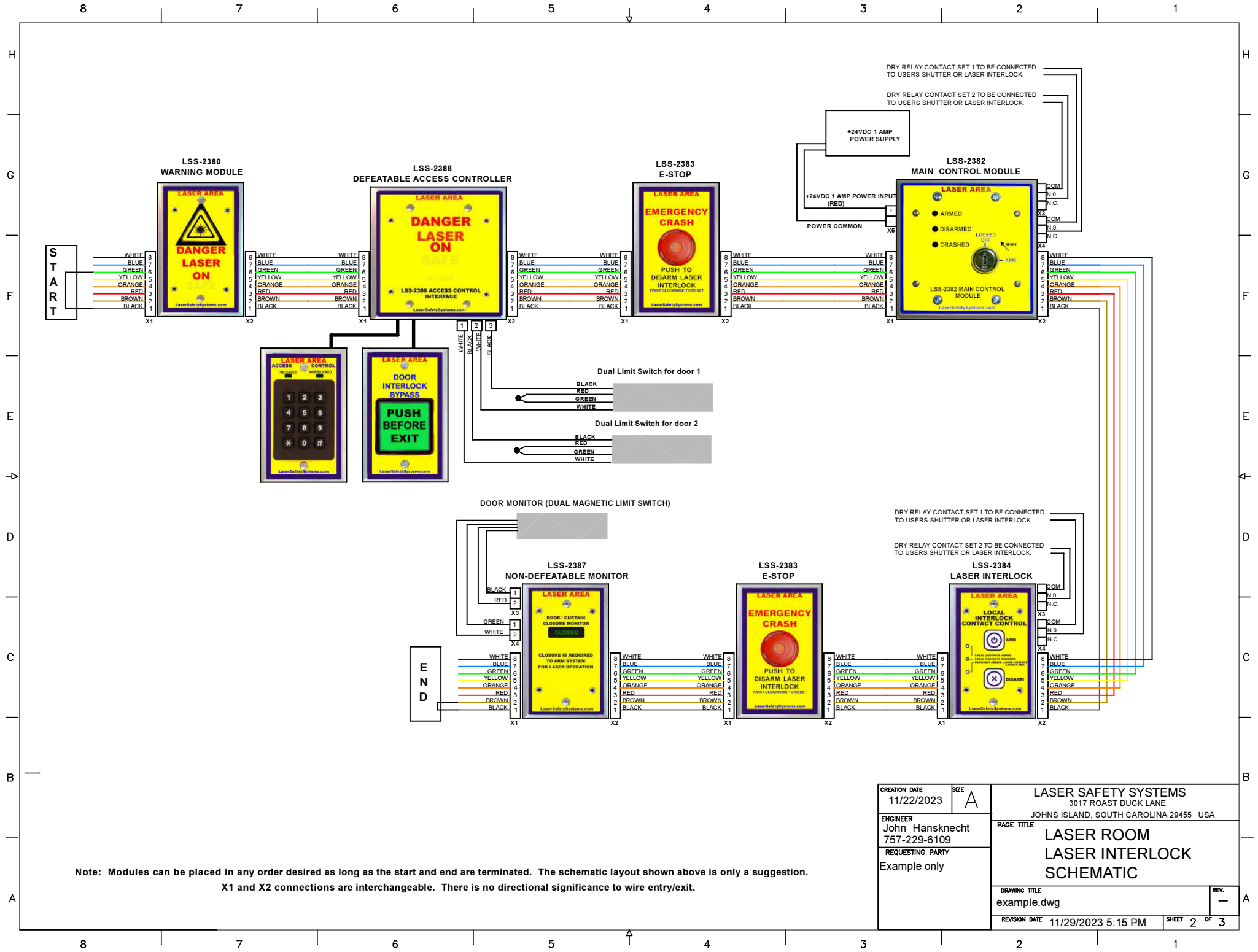
PHYSICAL LAYOUT IN LASER ROOM
GREEN LINE DEPICTS PATH OF 8-CONDUCTOR INTERLOCK CABLE
BLUE LINES INDICATE CONNECTION WIRES PROVIDED WITH LSS-2388 KIT

BILL OF MATERIALS (BOM) FOR THIS PLAN

ITEM	QUANTITY
LSS2380 Warning Module	1
LSS2382 MAIN CONTROL MODULE	1
LSS2383 EMERGENCY CRASH MODULE	2
LSS2384 LASER/SHUTTER INTERFACE RELAY MODULE	1
LSS2387 NON-DEFEATABLE ACCESS MONITOR KIT WITH 1 DOOR SWITCH	1
LSS2381 ROOM INTERLOCK CONTROL MODULE	0
LSS2388 DEFEATABLE ACCESS CONTROL KIT WITH MAIN CONTROLLER, KEYPAD, PTE, AND ONE DOOR SWITCH	1
LSS2306-12 EXTRA DOOR SWITCH FOR ADDITIONAL MONITORED DOOR LEAF	1
LSS2305 MAGNETIC LOCK (MAXIMUM OF TWO PER SYSTEM)	0
UL24V POWER SUPPLY	1
8CUL 8-CONDUCTOR INTERLOCK CABLE (FEET)	150

USER MANUALS CAN BE DOWNLOADED FROM:
https://lasersafetysystems.com/technical_data

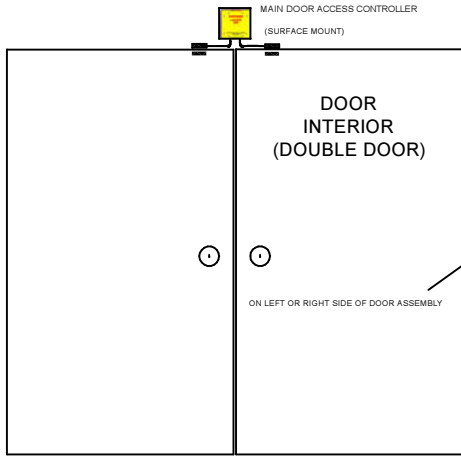
CREATION DATE 11/22/2023	SIZE A	LASER SAFETY SYSTEMS 3017 ROAST DUCK LANE JOHNS ISLAND, SOUTH CAROLINA 29455 USA
ENGINEER John Hansknecht 757-229-6109	REQUESTING PARTY Example only	
DRAWING TITLE example.dwg		REV. —
REVISION DATE 11/29/2023 5:15 PM		SHEET 1 OF 3



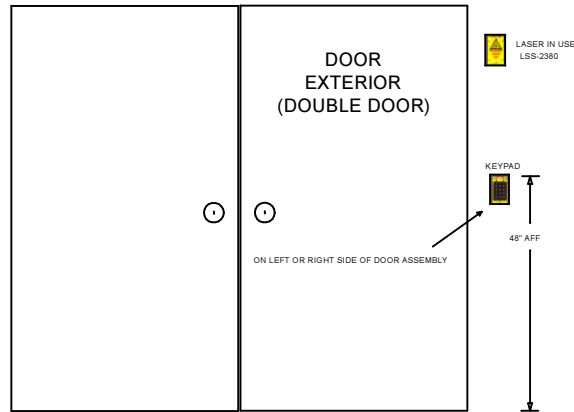
Note: Modules can be placed in any order desired as long as the start and end are terminated. The schematic layout shown above is only a suggestion.
 X1 and X2 connections are interchangeable. There is no directional significance to wire entry/exit.

CREATION DATE 11/22/2023	SIZE A	LASER SAFETY SYSTEMS 3017 ROAST DUCK LANE JOHNS ISLAND, SOUTH CAROLINA 29455 USA	
ENGINEER John Hansknecht 757-229-6109	REQUESTING PARTY Example only	PAGE TITLE LASER ROOM LASER INTERLOCK SCHEMATIC	
DRAWING TITLE example.dwg		REVISION DATE 11/29/2023 5:15 PM	SHEET 2 OF 3

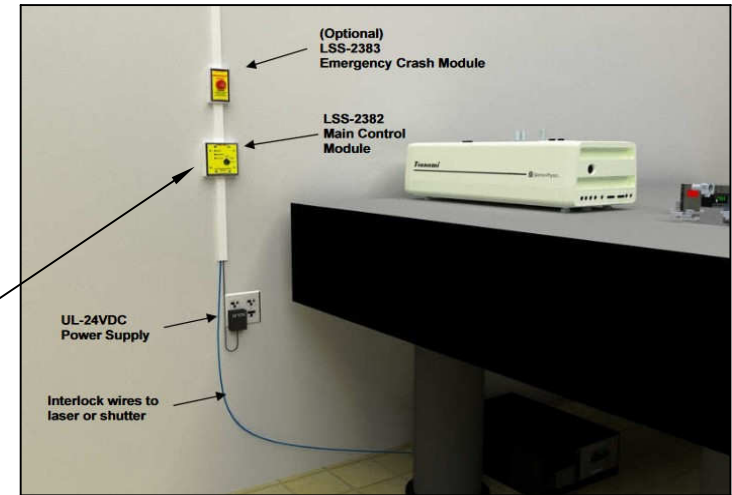
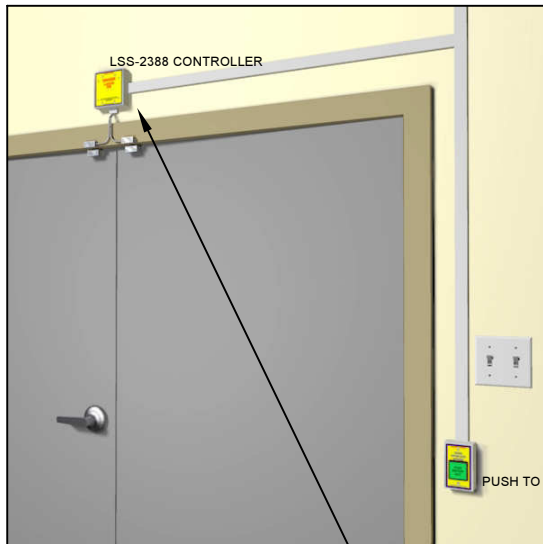
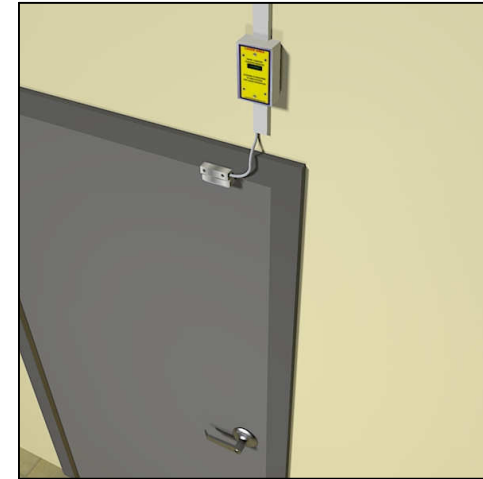
LSS-2388 DEFEATABLE ACCESS CONTROL



LSS-2388 DEFEATABLE ACCESS CONTROL



LSS-2387 NON-DEFEATABLE DOOR MONITOR ON INTERIOR SIDE



Hellermann-Tyton low-voltage surface mount boxes are **HIGHLY RECOMMENDED** for clean aesthetics when module has I/O signals coming outside of wall.
 Laser Safety Systems carries this product.
 Modules with room I/O are:
 LSS-2382 mounts on Hellermann-Tyton TSRW-JBD
 LSS-2388 mounts on Hellermann-Tyton TSRW-JBD
 LSS-2384 mounts on Hellermann-Tyton TSRS-JB2
 LSS-2387 mounts on Hellermann-Tyton TSRW-JB2

CREATION DATE 11/22/2023	SIZE A	LASER SAFETY SYSTEMS 3017 ROAST DUCK LANE JOHNS ISLAND, SOUTH CAROLINA 29455 USA	
ENGINEER John Hansknecht 757-229-6109	REQUESTING PARTY Example only	PAGE TITLE LASER ROOM LASER INTERLOCK MODULE TYPICAL PLACEMENT	
DRAWING TITLE example.dwg		REV. —	
REVISION DATE 11/29/2023 5:15 PM		SHEET 3 OF 3	