

Using the LSS-2388EZ Kit for a Laser Curtain Interlock

When small curtained enclosures need a defeatable laser interlock for entry and exit, we often recommend the layout shown below. In this layout, we utilize the messaging display of the LSS-2388EZ controller as a laser warning just outside the laser area. The entryway Keypad and Push-To-Exit button are pre-terminated to a length specified by the client. In the case shown below, the cable for the push to-exit button would be 48" and the keypad cable is 15".



Figure 1

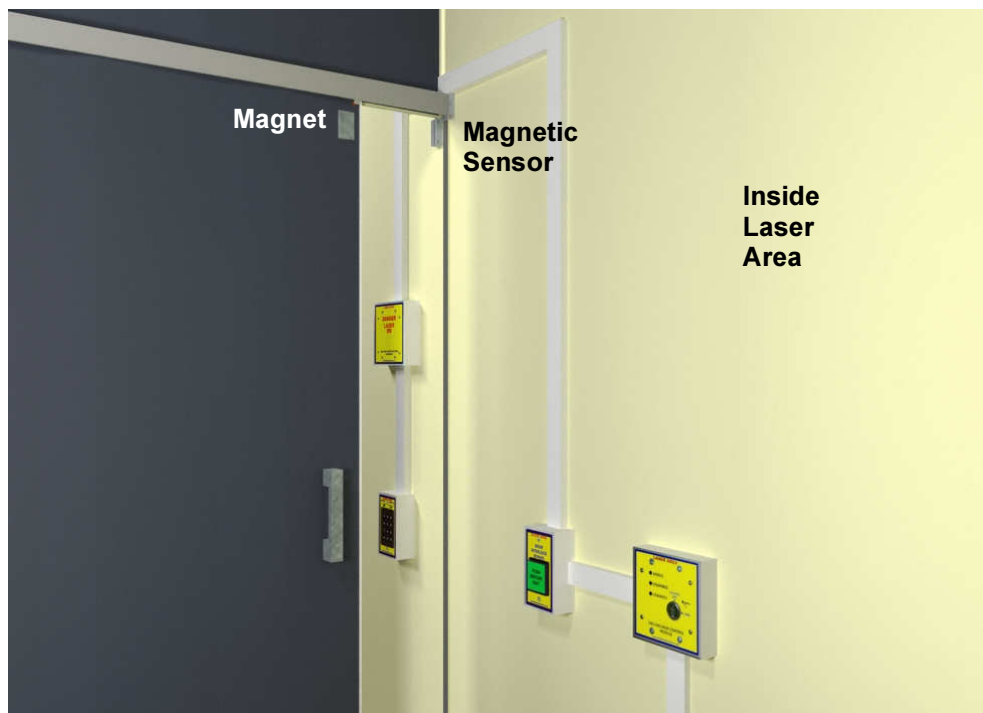


Figure 2

Our magnet and the sensor provided with the LSS-2388EZ Kit can be used or, if your curtain supplier provides a built-in switch, their switch can be used in lieu of our magnet and sensor. Our system is expecting to see a closed circuit when the curtain is closed.

In a small lab space, the system would be completed with the addition of the LSS-2382 Main Control Module and UL-24 power supply.

The LSS-2382 Main Control Module utilizes a high-security key to arm and disarm the interlock system.

All modules shown in this example are mounted in Hellermann-Tyton surface mount boxes and joined with surface track. Laser Safety Systems can provide this product, or your facility can choose another mounting method.

Figure 2 showed the LSS-2382 module installed with the curtain group, but the module may be installed further into the room as shown on figure 3 below. One simply extends our 8-conductor main interlock cable to the desired module mounting location.

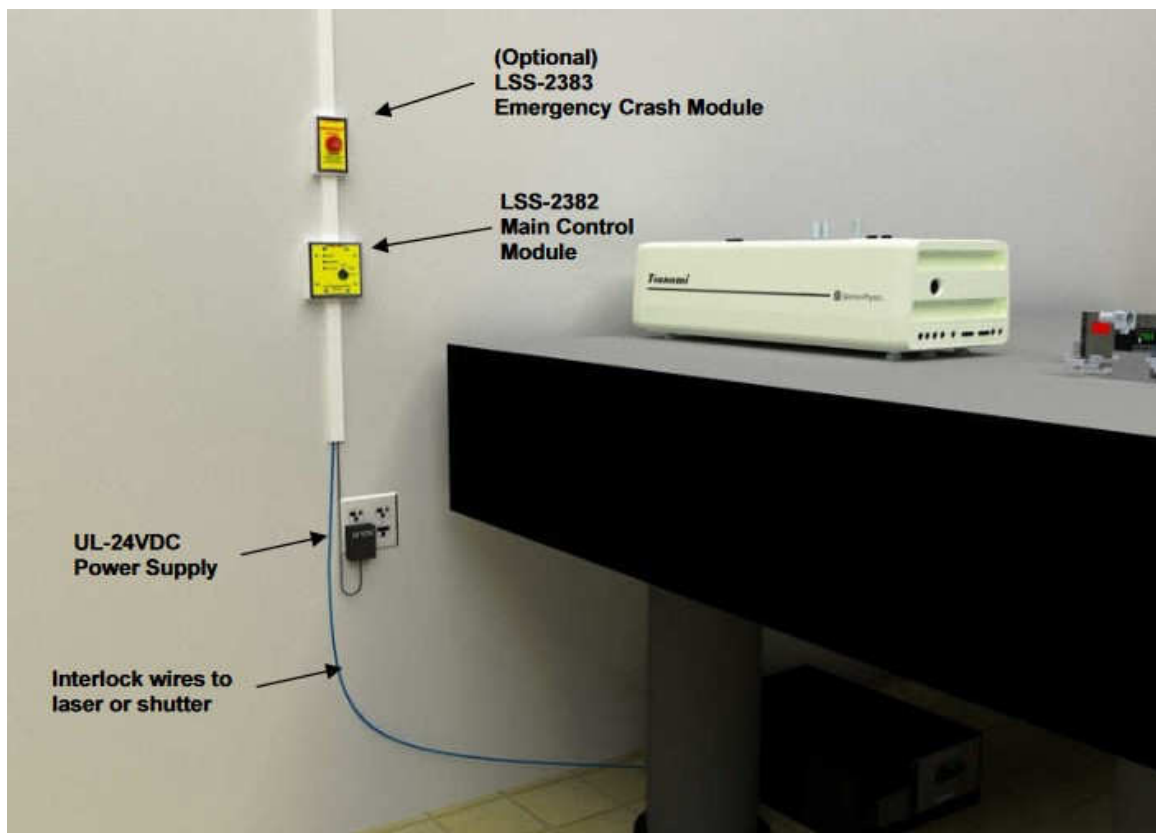
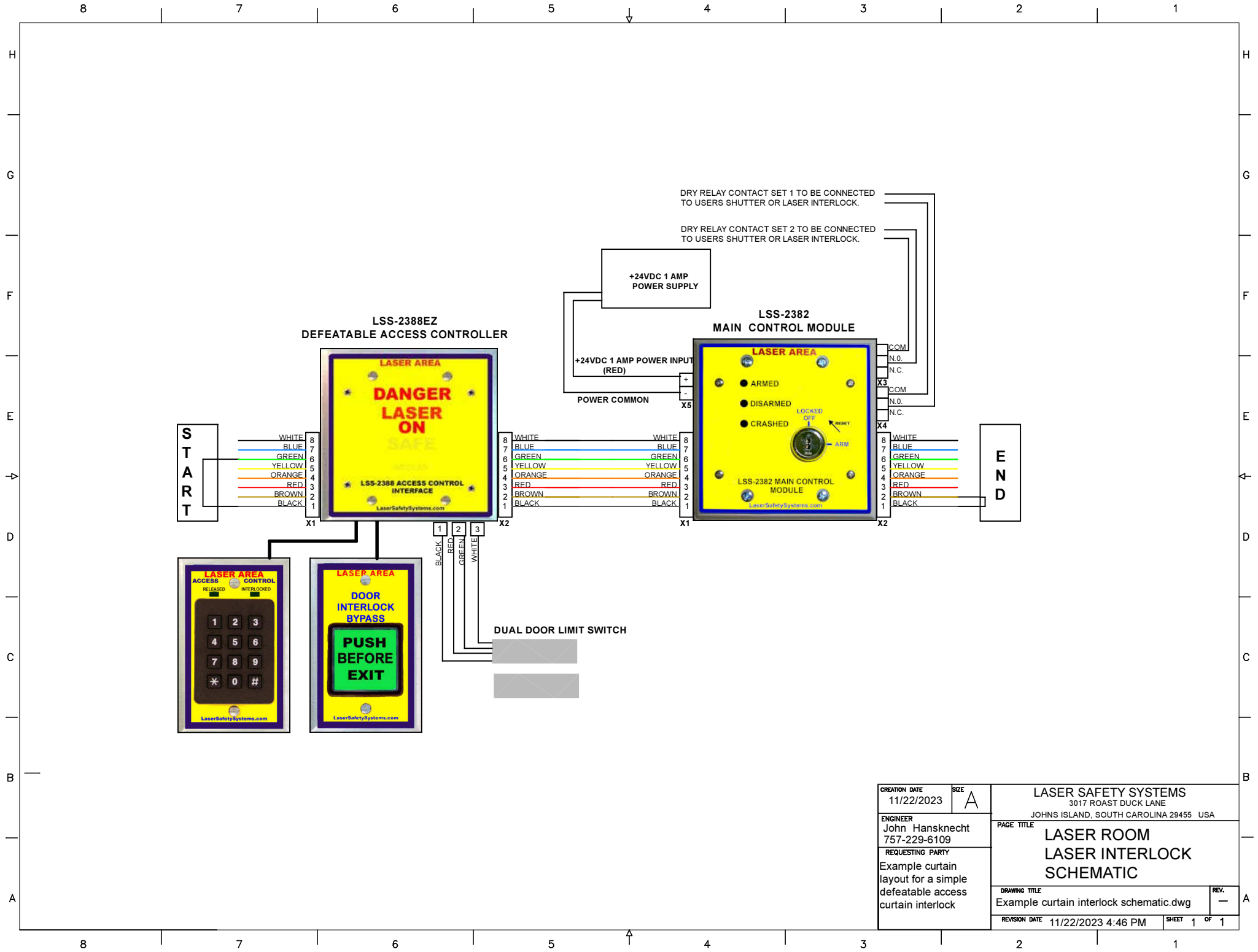


Figure 3

The following electrical schematic represents a complete minimalist operational system:



CREATION DATE 11/22/2023	SIZE A	LASER SAFETY SYSTEMS 3017 ROAST DUCK LANE JOHNS ISLAND, SOUTH CAROLINA 29455 USA	
ENGINEER John Hansknecht 757-229-6109	REQUESTING PARTY Example curtain layout for a simple defeatable access curtain interlock	PAGE TITLE LASER ROOM LASER INTERLOCK SCHEMATIC	
DRAWING TITLE Example curtain interlock schematic.dwg		REV. —	
REVISION DATE 11/22/2023 4:46 PM		SHEET 1	OF 1