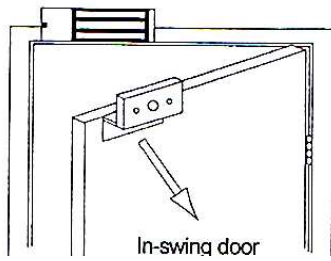


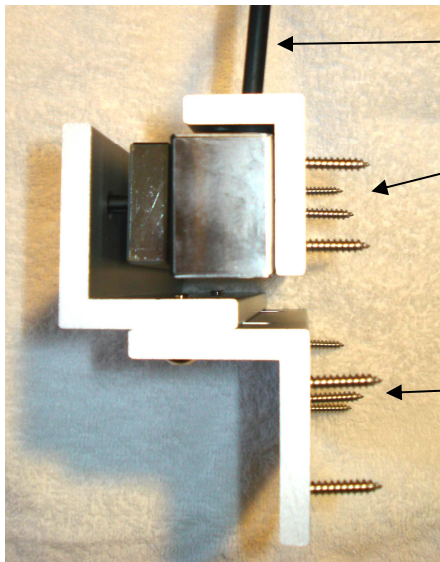
## Magnetic Lock mounting on a door that swings *inward* when exiting laser area.



Mounting on an in-swing door is accomplished by mounting the magnetic lock in a fixed position above the door while allowing the magnetic armature plate to swing with the door.

The entire assembly is mounted on the upper door jamb on the opposite side of the hinges. This provides the best mechanical advantage for the 400# magnetic force. Magnetic locks should always be mounted *INSIDE* the area that is being protected.

**Step 1:** Mount the "L" mounting plate to the upper door jamb as shown in figure 1. Once mounted, the magnetic lock will be attached using the black hex socket screws.

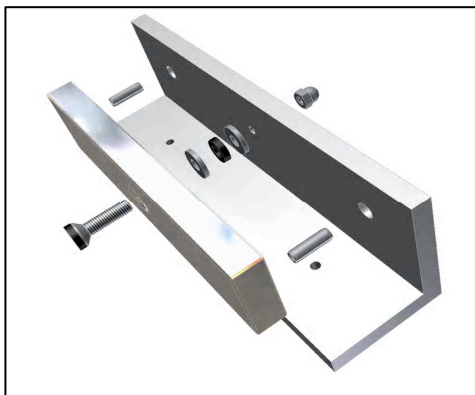


Cable points "up" and routes to maglock interface module via track, conduit, or surface adhesive ties.

Screw to upper door jamb for firm mounting of magnetic lock

Z brackets holding armature plate are attached to the swinging door. The slots in the Z bracket allow distance adjustment. The Z brackets are joined using 10/32 allen head screws. You must put the anti-slip washers under the screw head to ensure a solid assembly.

Figure 1



**Step 2:** Assemble the armature plate on to bracket Z1 as shown in figure 2. The alignment pins are gently tapped into the armature plate with a hammer. The shorter (1") flat head 10/32 screw with the rubber cap is placed through the plate. **Do not pull the rubber ring off the top of this screw. It is present to force a rapid release of the armature when the maglock is powered off.** A rubber washer is sandwiched between two metal washers. The flat head screw is then screwed into the Z1 plate and the round-head nut is placed on the end to lock the screw in place. Once assembled, the armature plate should have some flexure because of the rubber washer, but rotation is prevented by the alignment pins. This flexure makes it easier for the lock to find a natural alignment.

Figure 2

**Step 3:** Assemble the Z-brackets as shown in figure one and place the assembly so the face of the armature plate is in perfect alignment with the three shiny bars of the maglock. Mark the drill hole positions that will attach the lower Z bracket to the door. After pilot holes are drilled, the Z brackets are mounted with screws provided.

**Final Step:** Ensure proper alignment of armature plate to magnetic lock when the door is closed. The door should close completely without interference with the magnetic lock, yet the armature plate should be lightly touching the face of the magnetic lock.

*Note 1: Mount the armored magnetic door position sensors at least 3 inches away from the magnetic lock to prevent inadvertent cross talk.*